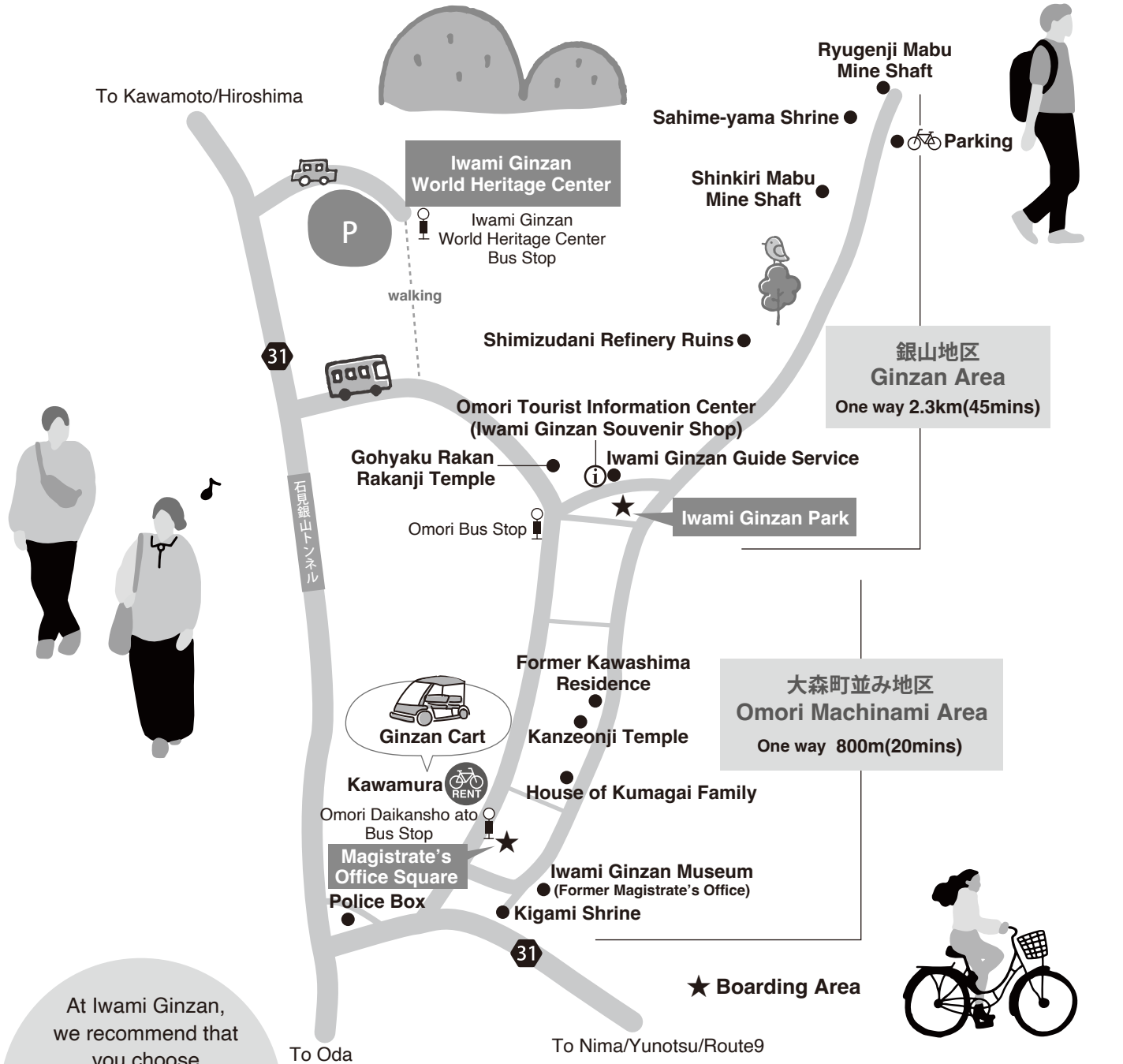
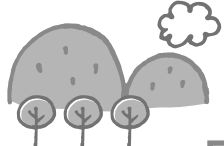


# Iwami Ginzan for First-Timers

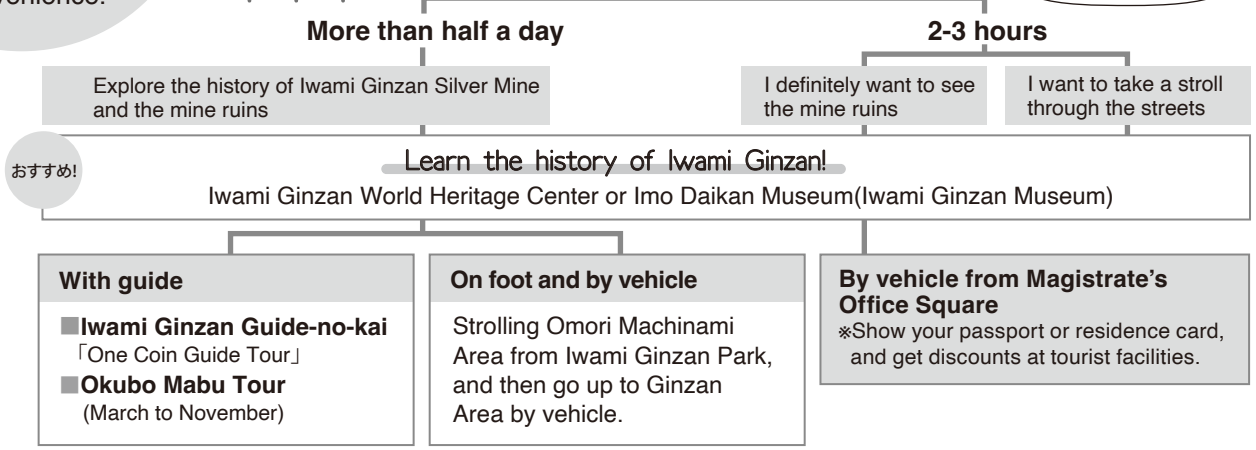


At Iwami Ginzan, we recommend that you choose transportation and sightseeing spots within the area according to your convenience.



**START!**  
How much time do you have for sightseeing?

If you only have about 1 hour, we recommend the townscape area.



## By vehicle

To Ryugenji Mabu Mine Shaft, please come with plenty of time(2hours)

### Electric bicycle rental

「Rent-a-cycle Kawamura」(nearest bus stop:「大森代官所跡Omori Daikansho-Ato」)

Business hours 8:30-17:00  
(February-December 8:30-16:30)

- Electric bicycle 2h ¥700
- Regular bicycle 3h ¥500



### Regional transportation electric cart

#### [ Ginzan Cart ]

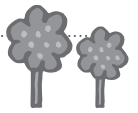
6 seats

Fee:¥500 (One way to Ryugenji Mabu)

- ※Reservations not accepted
- ※You can get on and off at the bus stop in the area
- ※Fares depend on boarding area
- ※Regular holidays are on Wednesday
- ※If the cart is full at the departure point, boarding at the intermediate stops may not be possible.
- ※In case of stormy weather, it may be closed.



## On foot



### ■ Approximate Round Trip Time

- Ginzan Area 2hours and more (Omori Bus Stop)
- Omori Machinami Area 1hour and half(Omori Bus Stop or Omori Daikansho Ato Bus Stop)

We recommend you to check the timetable of bus for return trip in advance.

## With guide

Ryugenji Mabu Mine Shaft is always open to the public.

Ryugenji Mabu Course (with English guide)  
Okubo Mabu Course (Japanese Language only)...Limited period  
Townscape area course (with English guide)

### Ryugenji Mabu Regular Course (With Japanese guide)

March to November 10:30-13:00-

December to February 10:30-

The meeting place: Iwami Ginzan Park

(nearest bus stop:「大森Omori」)

Sightseeing time:2.5 hours (guide time 90mins)

No reservations are required, but the number of participants is limited.

### Okubo Mabu Course (Japanese Language only) Limited period

Term: March to November

Date: Friday, Saturday, Sunday, Japanese holidays, August 11-13

Fee:¥4500(adult) ¥3500(Ages 7 to 15)

※Children under the age of 6 are not allowed

※No interpreters are available. This tour is in Japanese only.

### Souvenir

#### ■ 群言堂 Gungendo

Clothing, Stylish miscellaneous goods and Bedding

#### ■ 銀の店 Silver shop

High-purity Silver products

#### ■ 石見銀山おみやげ処 Iwami Ginzan Souvenir Shop

Iwami Ginzan Stamp, Ryugenji Mabu Stamp etc.

#### ■ 有馬光栄堂 Arima Ko-ei-do

Confectionery shop that has existed since the Edo period.

### Gourmet



Search restaurants in Oda City  
(Japanese Language only)

### Experience

#### ■ Iwami Ginzan silver ring making

〈鳩庵 Kyu-an〉3mins on foot from Iwami Ginzan Park

#### ■ Silver(丁銀) key chain making

〈石見銀山世界遺産センター

Iwami Ginzan World Heritage Center〉

※It's recommended that you contact them in advance for each experience.

## Parking

In order to ensure the safety of visitors, as well as the harmony between the residents' daily life and nature, please refrain from driving into the townscape area.

After parking your car at the Iwami Ginzan World Heritage Center, please take a local bus to the townscape area.



Local Bus Timetable

## On your way home.....

Onsen(Hot Spring)・・Yuzako Onsen(10mins)  
Yunotsu Onsen(25mins)

Shopping ・・Road Rest Goise-Nima (7mins)

Sightseeing ・・Nima Sand Museum



SHIMANE JAPAN  
Official Tourism Guide



yunotsu-meguri



I W A M I  
-Exploring Unfamiliar Japan-



Oda Travel Guide



## For those coming by large car



Information for large car  
(Japanese Language only)

To board bus and reserve a waiting space, you must make a ¥2000 reservation in advance. Please contact the Oda City Tourism Association or check the website.

## Access by bus from Iwami Ginzan World Heritage Center to the townscape area

石見銀山世界遺産センター  
Iwami Ginzan World Heritage Center  
駐車場 Parking

石見銀山公園 Iwami Ginzan Park  
大森観光案内所 Omori Tourist Information Center  
石見銀山ガイドの会 Iwami Ginzan Guide Service

レンタサイクル河村 Rent-a-cycle Kawamura  
いも代官ミュージアム Iwami Ginzan Museum  
お食事処おもり Restaurant Omori

